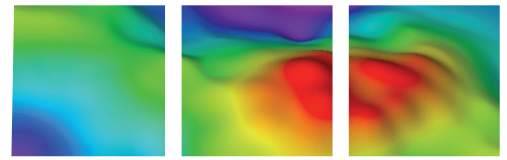
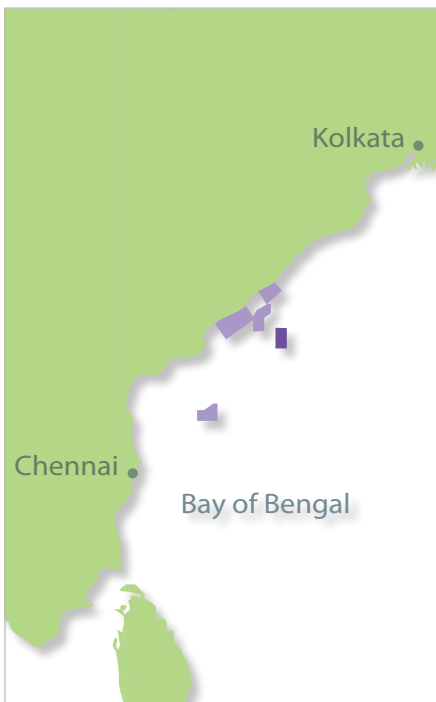


EMGS Multi-Client Services

Empowering exploration



Project summary



Area:	Krishna-Godavari basin, Bay of Bengal
Country:	India
Type of data:	Clearplay Find
Data acquisition:	Q1 2008

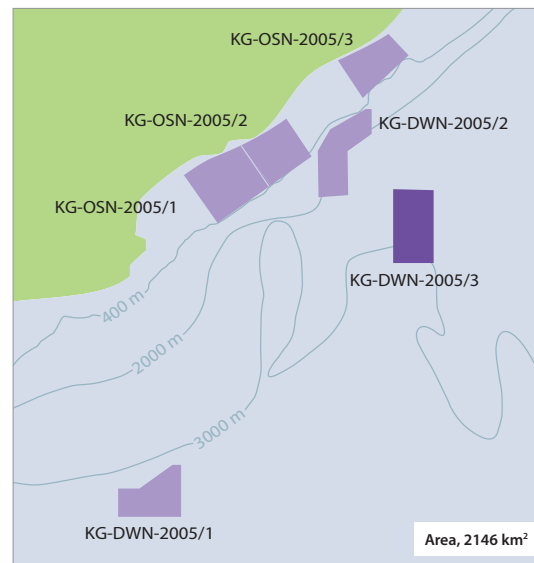
Krishna Godavari basin, India

Exploration focus

India's deepwater Krishna-Godavari basin is emerging as one of the world's hottest oil and gas exploration areas. The basin's huge potential is demonstrated by Reliance Industries 19 discoveries since 2000.

The Indian government's New Exploration Licence Policy (NELP) has liberalised India's upstream industry, and is successfully attracting foreign and private investment. NELP Round VII, launched in december 2007, has three shallow water and three deepwater blocks on offer in the Krishna-Godavari basin. The bidding deadline has now been extended to 30 June.

EMGS has recently acquired an electromagnetic (EM) scanning survey of one of the deepwater blocks, KG-DWN-2005/3, and data from this survey are now available.



EM scanning survey area

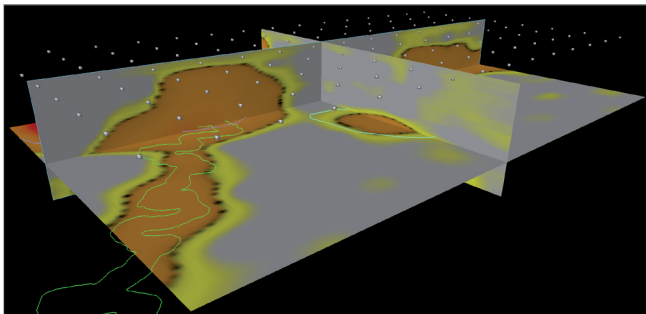
The Krishna-Godavari basin is one of the world's most exciting exploration areas. Optimise your bidding strategy with Clearplay Find.

Operational methodology

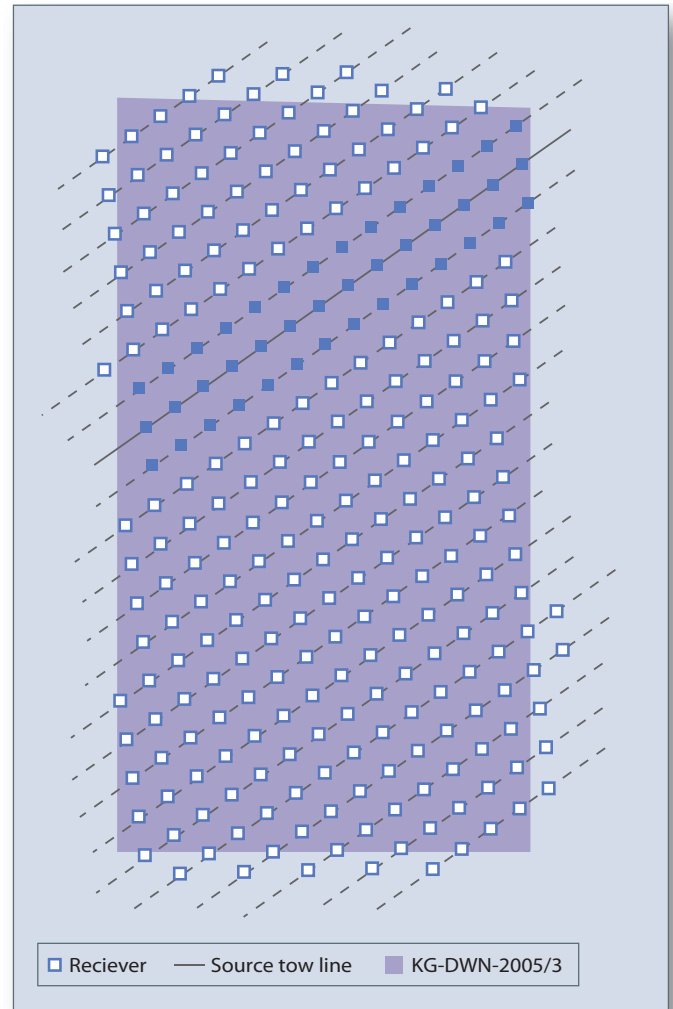
The survey was acquired over a 3-km grid of 272 receivers. Adjacent receiver lines were staggered in the in-line direction to provide maximum protection against spatial aliasing. Twenty-three source lines were towed parallel to the existing seismic lines. For each source line, at least three receiver lines were active throughout the survey to give wide azimuth sampling of the subsurface volume. This approach ensured that the entire volume was investigated.

Survey deliverables

- Attribute cubes (SEG-Y)
- Processing report
- Pre-delivery training
- Post-delivery modelling and interpretation support
- Scanview data analysis software license
- Petrel™ plug-in available (additional charge)
- Raw data available on demand (media/shipping costs only)



Attribute cube



Receiver layout

North and South America

Carl Hutchins
Houston, USA
chutchins@emgs.com
+1 713 819 4883

Europe, Africa, Middle East

Aslak Myklebostad
Stavanger, Norway
am@emgs.com
+47 91 51 97 68

Asia Pacific

Thomas Sjøberg
Kuala Lumpur, Malaysia
tas@emgs.com
+601 22 21 74 77

For more information about EMGS and EM imaging, please visit emgs.com

